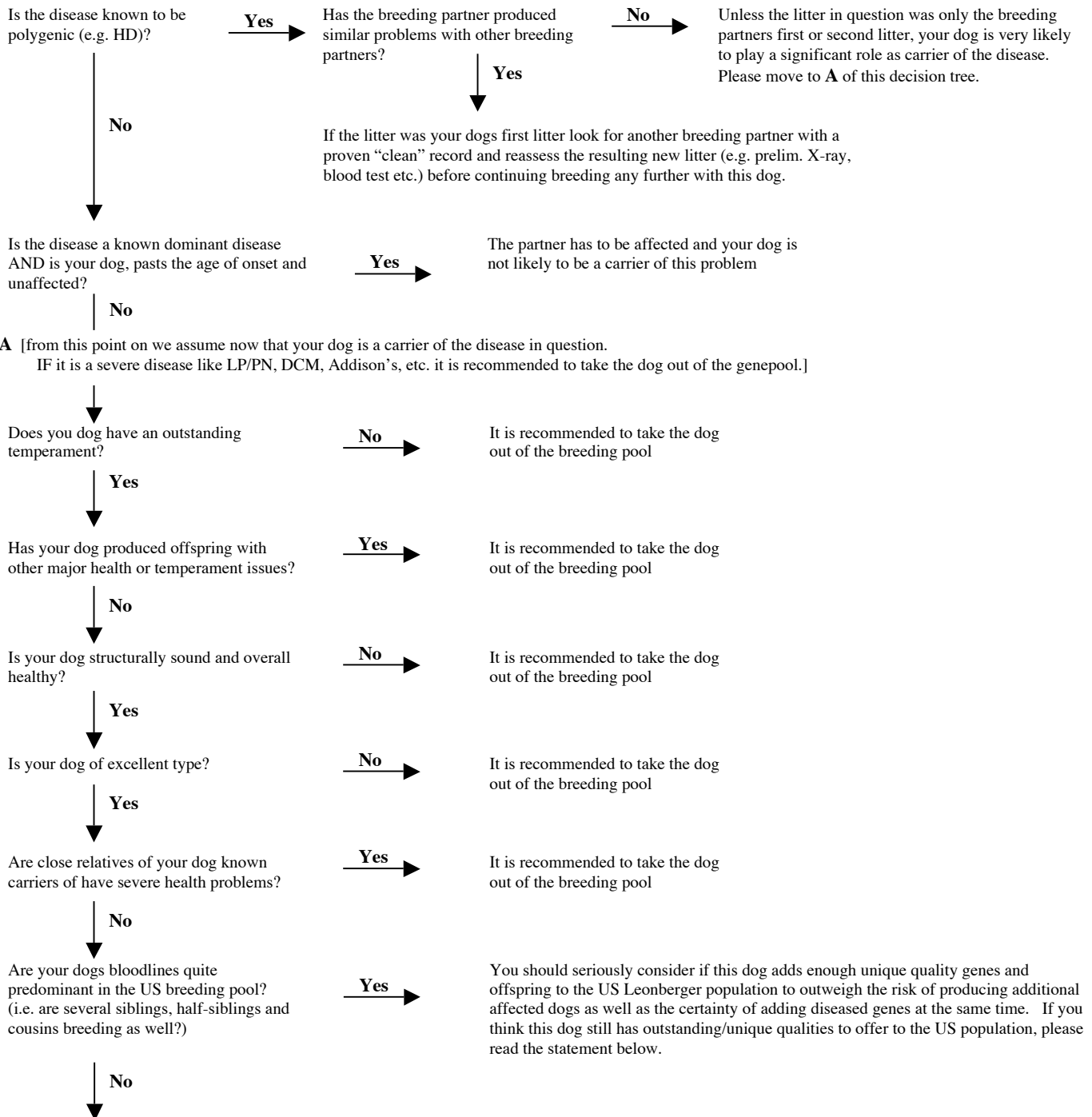


My dog has produced one or more puppies with a heritable disease, what do I do know?

To Breed or not to breed, that is the question.....

(this does not include X-linked diseases)



If you end up here and you personally feel there is a justification for breeding this dog again, you need to research all prospective partner lines very carefully. You need to ensure you have sufficient, trustworthy and positive information about the prospective breeding partner before making a final decision. If you do breed again, all puppy buyers should be informed about the issues in the earlier litter. Each buyer must be given adequate information to make their own decision about sharing the risk of buying a puppy in this new breeding.

Reaching this point in the evaluation process is by no means a sanction by anybody to breed this dog again. The decision tree is a tool to help think about different factors that should be considered in the decision making process – the final decision and responsibility lies entirely with the breeder.